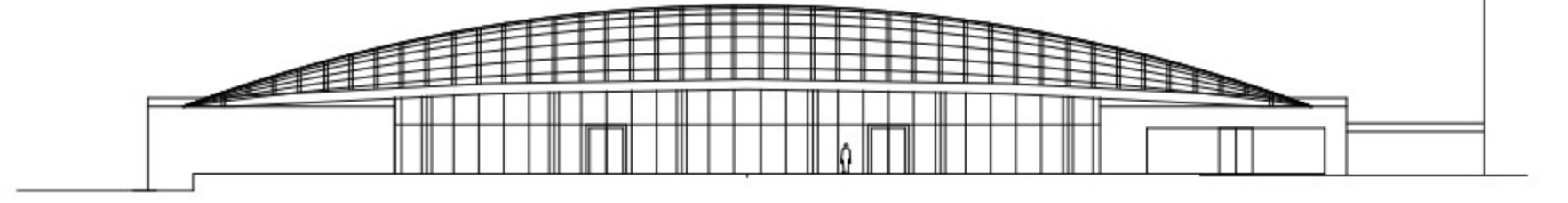
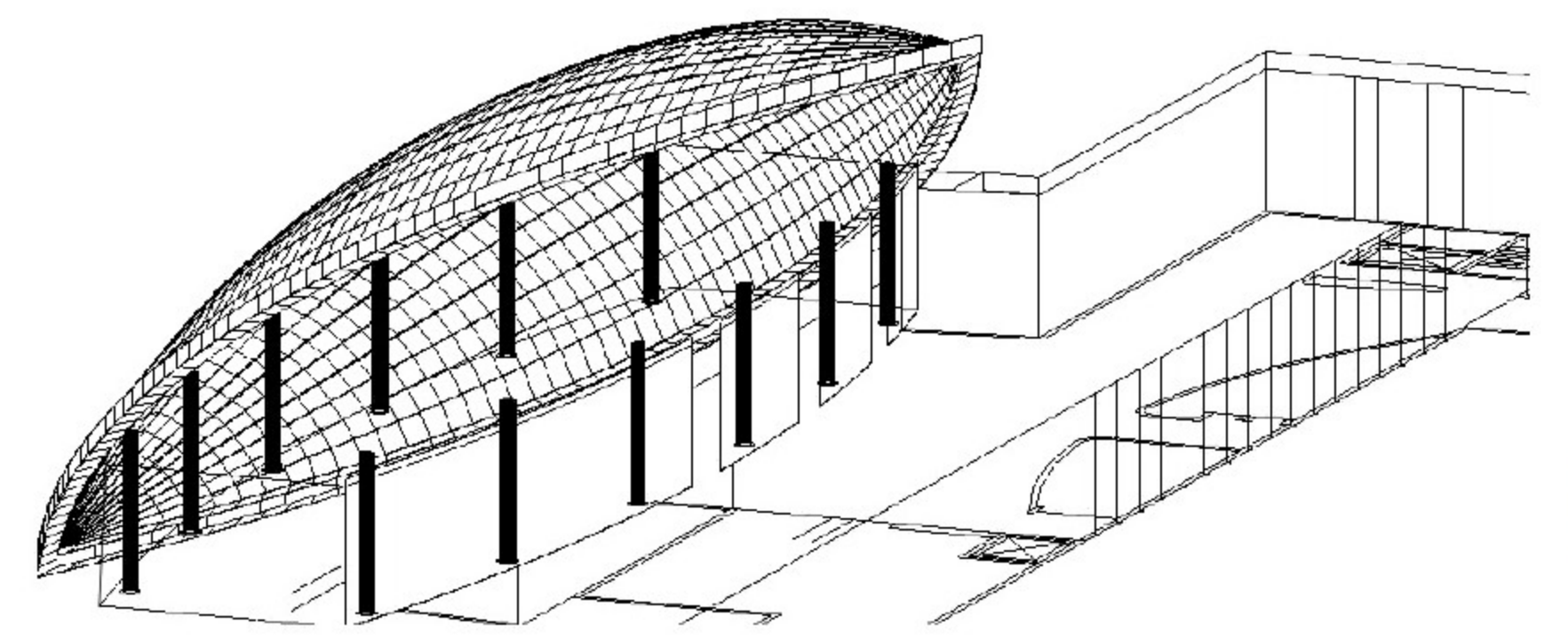
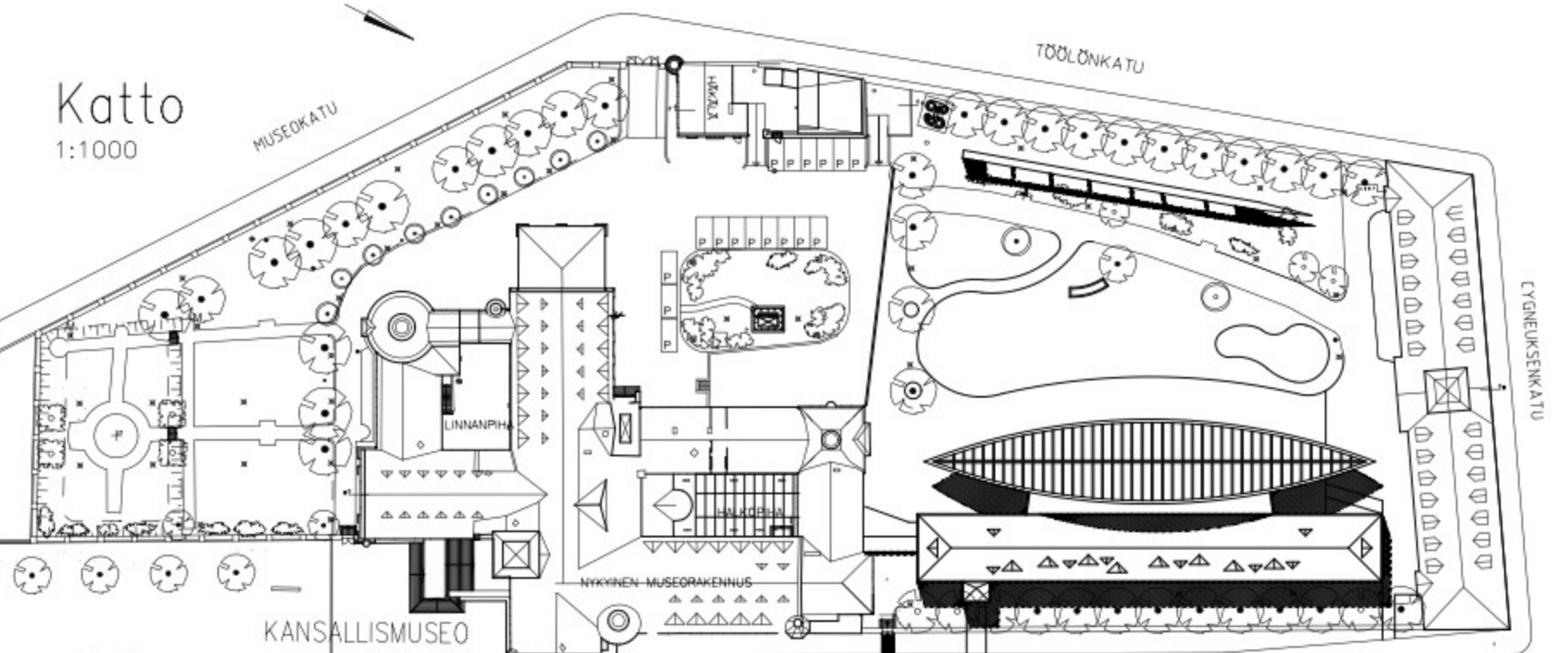


# LASI-VENE

Kansallismuseon lisärakennus "Uusi Kansallinen"



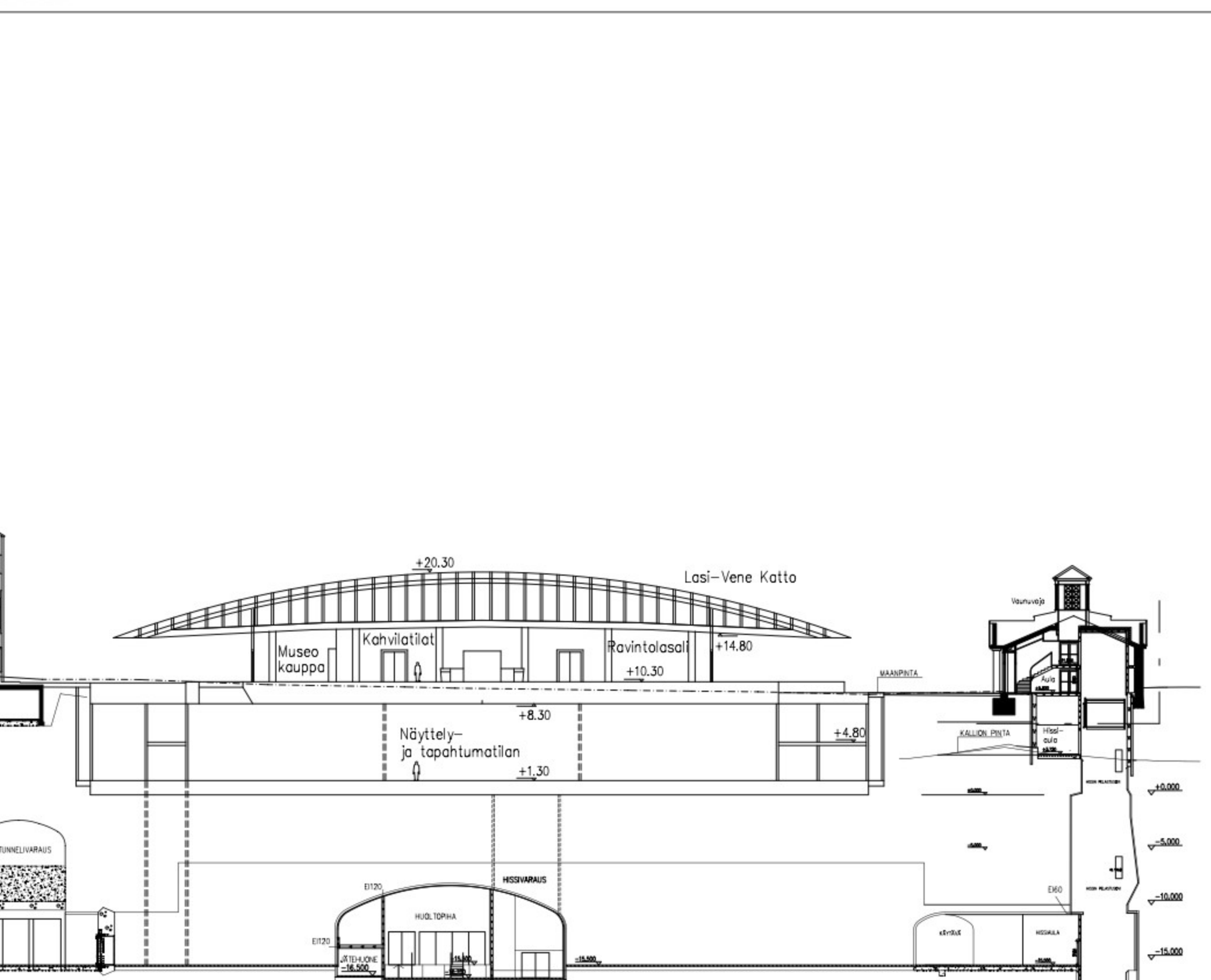
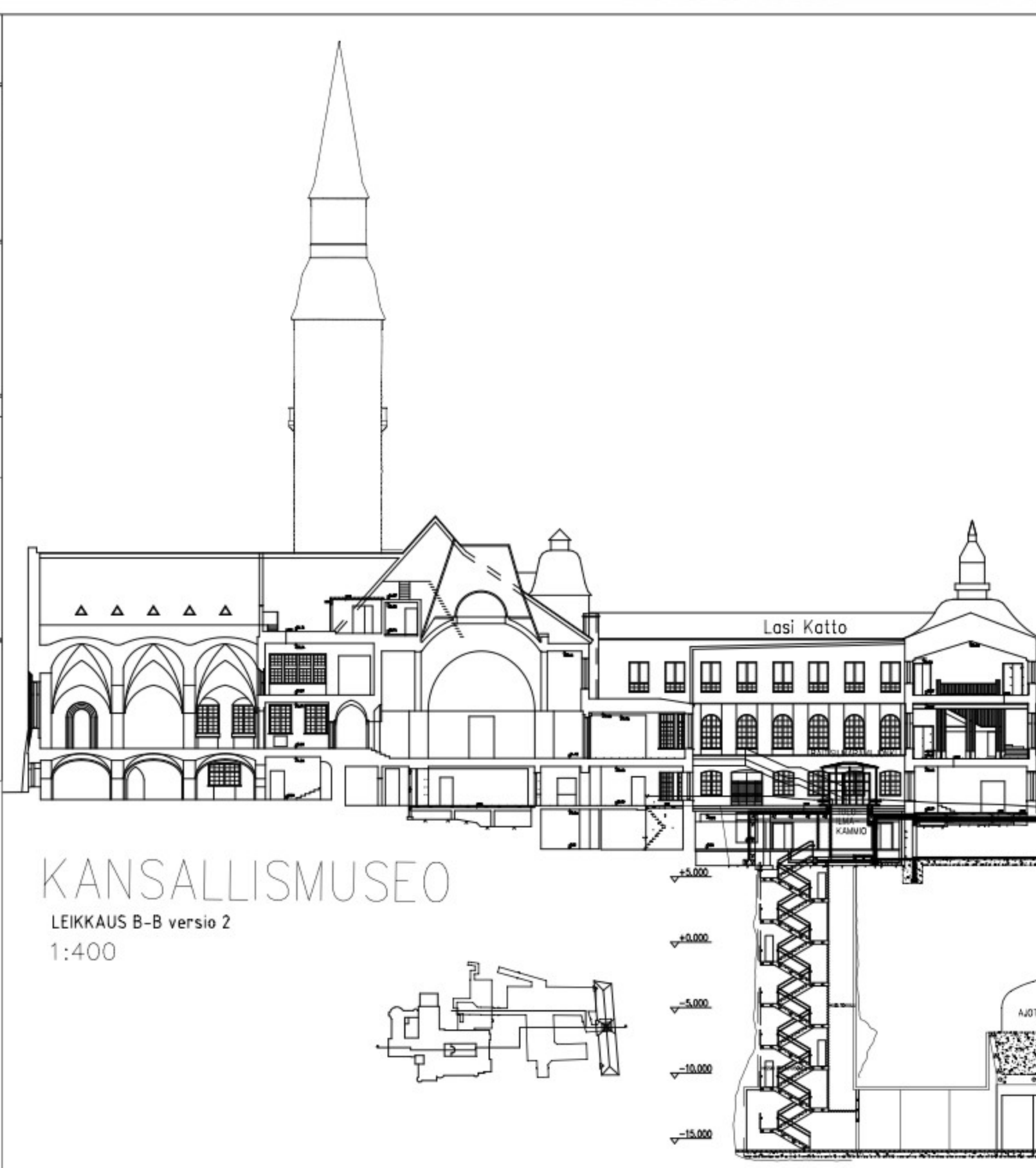
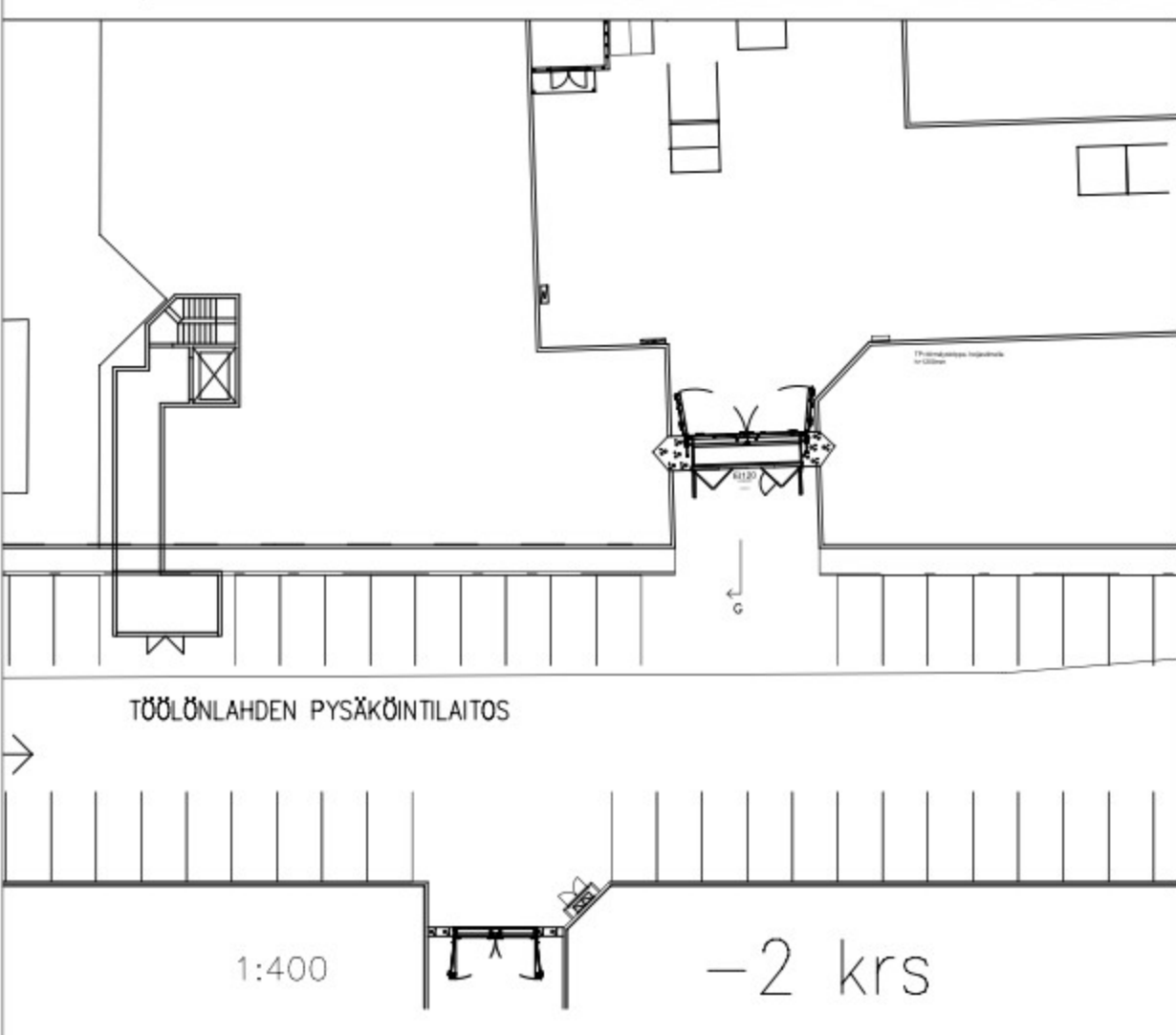
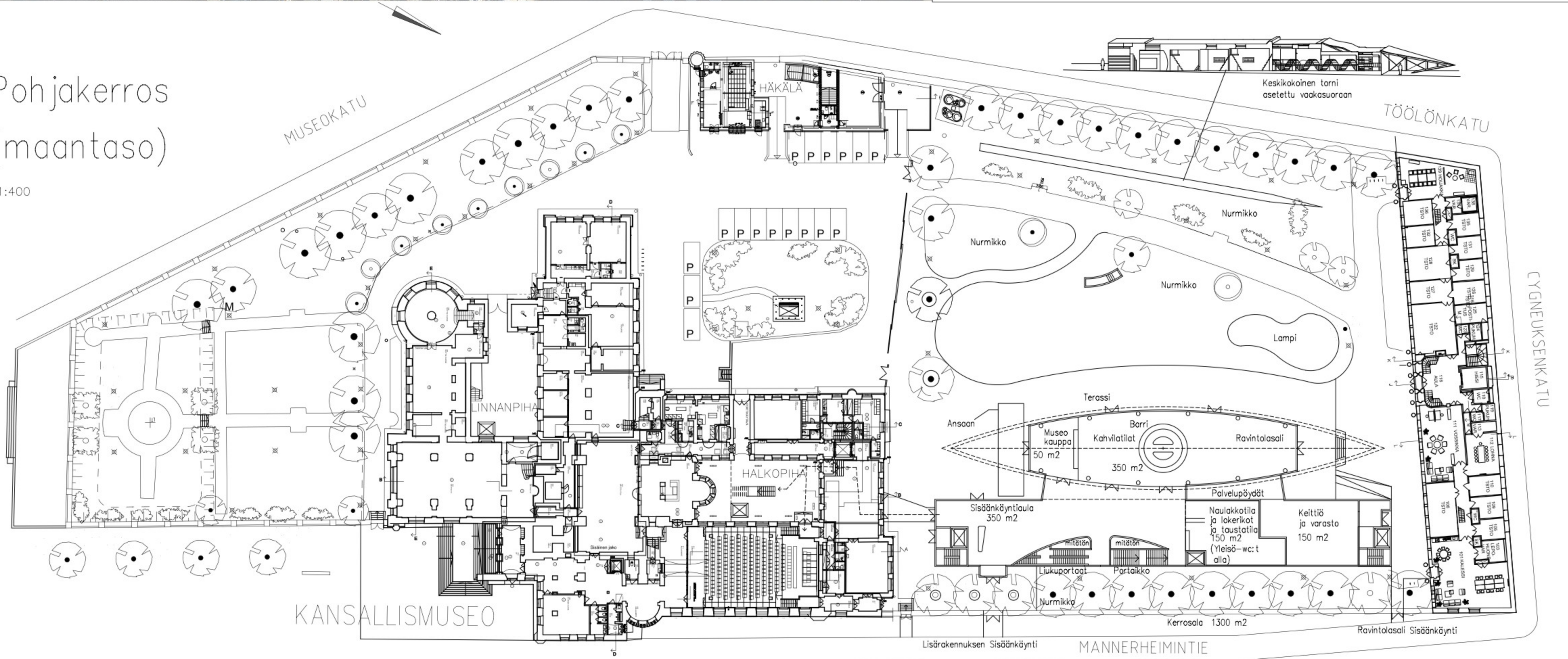
Julkisivu 1:400



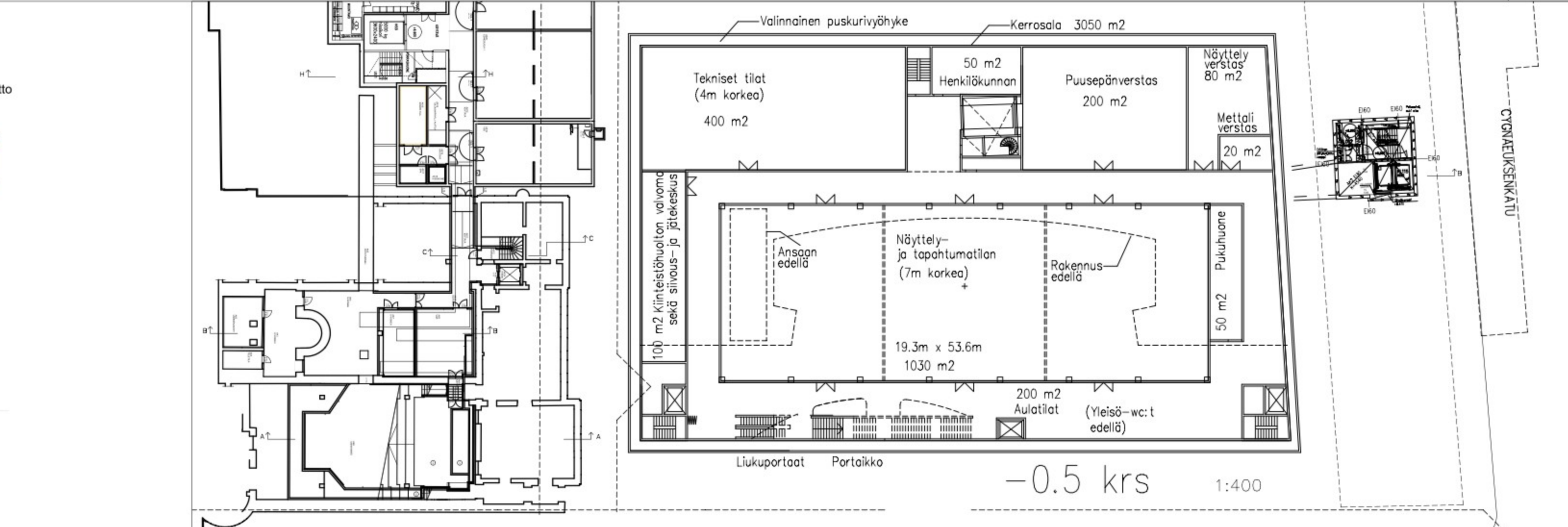
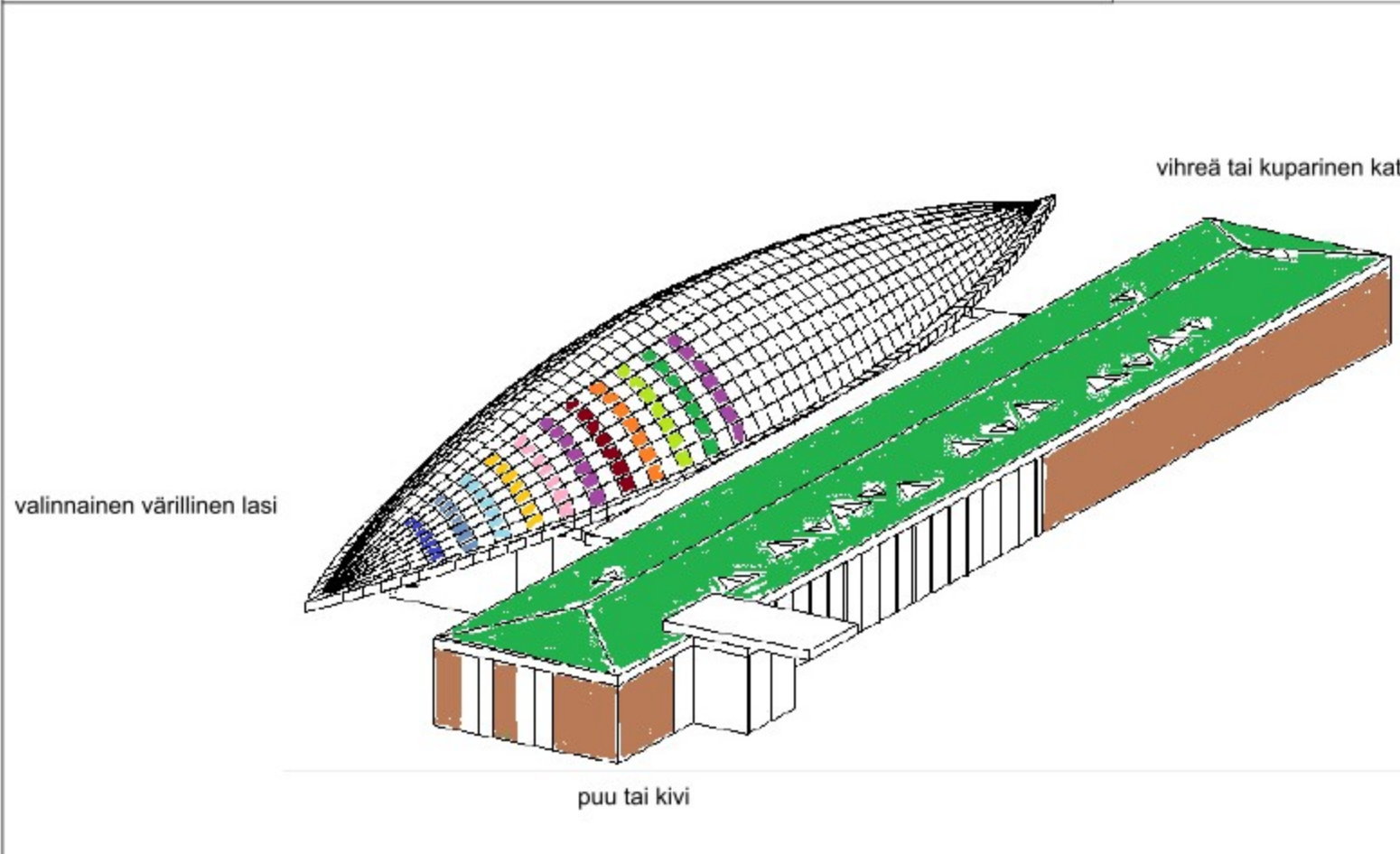
Katto  
1:1000

## Pohjakerros (maantas)

1:400



Rakentaminen: teräs ja teräsbetoni.  
Materiaalit: lasi, kupari, kivi, puu, alumiini, teräs ja kipsilevy.  
Pinta-ala: 1300 m<sup>2</sup> maanpinnan yläpuolella + 3050 m<sup>2</sup> maanpinnan alapuolella = 4350 m<sup>2</sup> (ilman mezzanineja).  
Katso suunnitelmat huoneen pinta-alasta verrattuna lyhyeen.





# LASI-VENE

Kansallismuseon lisärakennus "Uusi Kansallinen"

TARKASTUKSET JA OHJEET

